

Examination Paper

Music Theory Grade 2



Time Allowed: 1 hour 30 minutes
Answer all questions on this paper

Students Name

Total Marks out of 100

1 Name each of the notes below.

10 Marks

2 Rewrite these notes grouped correctly on the staff below.
Change the direction of the stems if necessary.

10 Marks

3a Add one rest at * in bars 1, 2 and 3. Add one note at * in bars 4 and 5, to complete each bar.

A single staff of music in 3/4 time. The notation consists of five bars. Above the staff, there are five asterisks (*) positioned at the beginning of each bar. The notes in the bars are: Bar 1: quarter, quarter, quarter; Bar 2: quarter, eighth, eighth, quarter, eighth, eighth, quarter; Bar 3: quarter, quarter, quarter, quarter; Bar 4: quarter, quarter, quarter, quarter, quarter; Bar 5: quarter, quarter, quarter, quarter, quarter.

3b The melody below has four pairs of tied notes. Under each pair write the number of beats each note lasts.

A single staff of music in 2/4 time. The melody consists of eight notes: quarter, quarter, quarter, quarter, quarter, quarter, quarter, quarter. There are four pairs of tied notes: (1,2), (3,4), (5,6), and (7,8).

10 Marks

4 Name the major key and then draw its tonic triad.

Five staves of music. The first staff is a treble clef with a key signature of two sharps (F# and C#). The second staff is a treble clef with a key signature of one flat (Bb). The third staff is a bass clef with a key signature of one sharp (F#). The fourth staff is a bass clef with a key signature of one sharp (F#). The fifth staff is a treble clef with a key signature of one sharp (F#). Below each staff is a horizontal line for writing the tonic triad.

10 Marks

5a Describe the distance between these notes as tone or semitone.

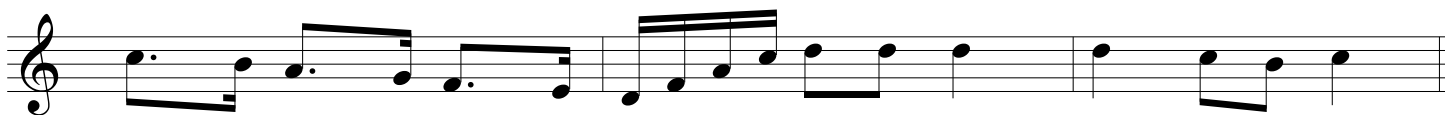
A single staff of music in treble clef. The notes are: (1) G4, A4; (2) B4, C5; (3) D5, E5; (4) F5, G5; (5) A5, B5. Below each pair of notes is a horizontal line for writing the interval name.

5b Add accidentals to put the following melody in the key of Bb major.

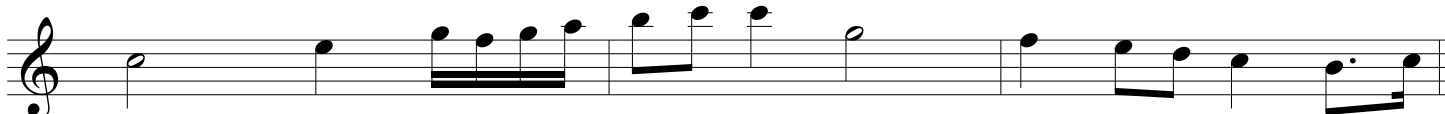
A single staff of music in 3/4 time. The melody consists of nine notes: quarter, quarter, quarter, quarter, quarter, quarter, quarter, quarter, quarter. The notes are: G4, A4, B4, C5, B4, A4, G4, F4, E4.

10 Marks

6a Add the missing time signatures. Describe it as Duple, Triple or Quadruple.







6b Add the missing barlines to this tune.



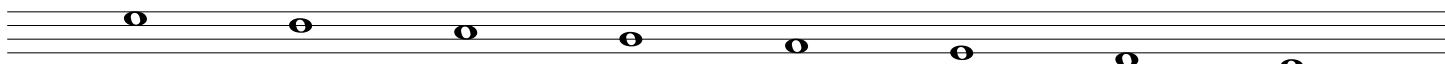
10 Marks

7 Add a clef and a key signature to make each of the following scales. Write the solfa names below the notes. Indicate the semitones with slurs.

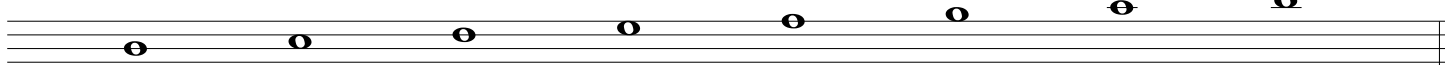
F major



G major



D major



10 Marks

Answer questions 8, 9 and 10 on the following piece of music.

8 Add these signs and letters to the music.

- (i) Write letters at the beginning to show that it should be played moderately loud.
- (ii) Draw a symbol below bar 5 to show that the music is gradually getting louder.
- (iii) Draw a symbol below bar 7 to show the music is gradually getting softer.
- (iv) Write a letter below bar 13 to show the music is to be played very softly.
- (v) Draw a repeat mark at the end of the piece.

10 Marks

9 Answer the following questions.

- (i) What key is the piece in? _____
- (ii) How many beats are in each bar? _____
- (iii) What is the letter name of the lowest note? _____
- (iv) What is the letter name of the highest note? _____
- (v) How many times is the highest note played? _____

10 Marks

10 Answer the following:

- (i) The shortest note value is a _____
- (ii) Name two bars which are the same. _____
- (iii) Give the numbers of the four bars in which the notes move by leap only. _____
- (iv) Copy out bars 8, 9, 10 and 11 onto the stave below.

10 Marks